

Crutchfield
13-700-00



13-701-00
3.5 mmØ



13-702-00
5.0 mmØ



Crutchfield
13-703-00



13-704-00

large type, cervical traction tongs – pins adjustable no drilling to be done

grosses Modell, für Extension der Halswirbel – kein Vorbohren erforderlich – Dorne verstellbar

modelo grande, distractor cervical – espigas ajustables sin necesidad de trepanar

modèle large, distracteur cervicale – poinçons ajustables pas de perçage nécessaire

modello grande, distrattore cervicale, pin aadjustabili, non necessita di perforare, regolabili

13-705-00

Spare pin
Ersatzdorn
Pivote de cambio
Goupille de rechange
Punta di ricambio



13-706-00

Wrench, double-ended
Gabelschlüssel, doppelendig
Llave de tuercas
Clé de fixation,
Chiave



Hudson

13-707-27 27 cm - 10 3/4"

complete with 4 twist drills (Fig. 1 – Fig. 4) and extension piece
komplett mit 4 Bohren (Fig. 1 – Fig. 4) und Verlängerungsstück
completa con 4 fresas (Fig. 1 – Fig. 4) y pieza de prolongación
complet avec 4 mèches (Fig. 1 – Fig. 4) et pièce d'extension
completo con 4 frese (Fig. 1 – Fig. 4) e pezzo di prolungazione



13-708-27

Extension piece
Verlängerungsstück
Pieza de prolongación
Pièce d'extension
Pezzo di prolungazione



13-709-01

Fig.1
9 mmØ



13-710-02

Fig.2
14 mmØ



13-711-03

Fig.3
16 mmØ



13-712-04

Fig.4
22 mmØ



Cushing

13-713-04

14 mmØ



McKenzie

13-714-04

13 mmØ



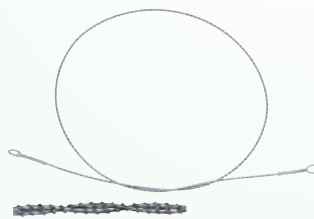
De Martel
13-717-33
33 cm - 13"



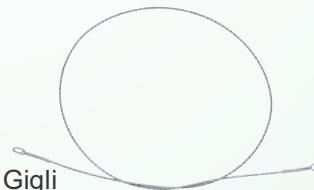
Adson
13-715-15 15 cm - 6"



De Vibiss
13-716-21 21 cm - 8 1/4"



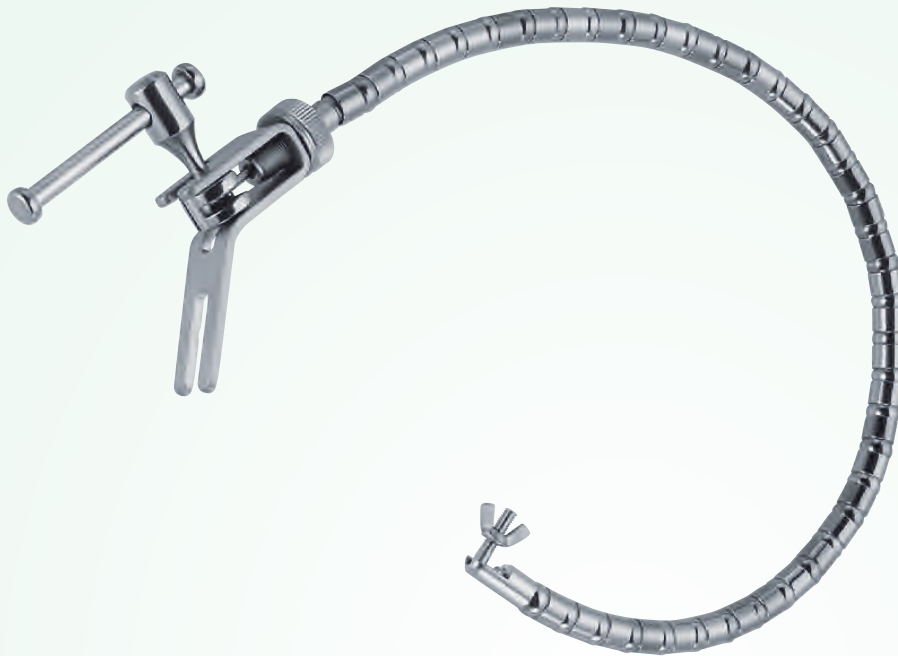
Olivecrona
13-718-30 30 cm - 12"
13-718-40 40 cm - 16"
13-718-50 50 cm - 20"
13-718-60 60 cm - 23 1/2"
13-718-70 70 cm - 27 1/2"



Gigli
13-719-30 30 cm - 12"
13-719-40 40 cm - 16"
13-719-50 50 cm - 20"
6 wires twisted
6-teilig
6 alambres torcidos
6 fils tordus
6 fili attorcigliati



Gigli
13-720-00



13-721-00

Brain retractor self-retaining, with 1 flexible arm, complete, consisting of: fixation base for 1 flexible arm, flexible arm only, support for flat brain spatulas

Selbsthaltender Hirnretraktor, flexibel mit 1 Spannarm, komplett, bestehend aus: Fixierungsvorrichtung für 1 Spannarm, Spannarm und Spatelhalter für flache Spatel
Separador cerebral autostatico, 1 brazo flexible con soporte, completo con brazo y soporte para spatulas llanas

Retracteur cérébrale autostatique, flexible avec 1 tendeur, complét avec support pour 1 tendeur, tendeur et porte-spatule pour spatules plates

Retratore celebrale autostatico, flessibile
Completo, contente: supporto di fissaggio per un braccio, 1 braccio flessibile con supporto di fissaggio per spatole piatte

13-722-00

Brain retractor self-retaining, with 2 flexible arms, complete, consisting of: fixation base for 2 flexible arms, 2 flexible arms, 2 supports for flat brain spatulas

Selbsthaltender Hirnretraktor, flexibel mit 2 Spannarmen, komplett, bestehend aus: Fixierungsvorrichtung für 2 Spannarme, 2 Spannarme und 2 Spatelhalter für flache Spatel
Separador cerebral autostatico, 2 brazos flexibles con soporte, completo con brazos y soporte para 2 spatulas llanas

Retracteur cérébrale autostatique, flexible avec 2 tendeurs, complét avec supports pour 2 tendeurs, 2 tendeurs et 2 portes-spatule pour spatules plates

Retratore celebrale autostatico, flessibile con 2 bracci completi, contiene: supporto di fissaggio per bracci per 2 spatole piatte



13-723-00

Fixation base only, holding 2 flexible arms
Fixierungsvorrichtung allein, für 2 Spannarme
Soporte solo para 2 brazos de separador
Support seul pour 2 tendeurs
Supporto di fissaggio per 2 bracci, solo

13-724-00

Fixation base only, holding 1 flexible arm
Fixierungsvorrichtung allein, für 1 Spannarm
Soporte solo para 1 brazo de separador
Support seul pour 1 tendeur
Supporto di fissaggio per 1 braccio, solo

13-725-00

Support only, for flat brain spatulas
Spatelhalter allein, für Flachspatel
Soporte solo, para spatulas planos
Porte-spatule seul, pour spatules plates
Supporto solo, per fissaggio di spatole piatte

13-726-00

Support only, for brain spatulas with round shaft
of 4mm and 5mm Ø to fix on the flexible arm
Spatelhalter allein, für Spatel mit Rundschaft
von 4mm und 5mm Ø, zum Befestigen am Spannarm
Soporte solo para la fijación de spatulas
de 4mm y 5mm Ø al brazo
Porte-spatule seul pour la fixation des spatules
de 4mm et 5mm Ø diam
Supporto solo per spatole con asta tonda
di Ø 4mm e 5mm

13-727-00

Flexible arm only – for attaching coupling heads and
for fixation bases
Spannarm allein – zum Aufstecken auf Kupplungsköpfe
und Fixierungsvorrichtungen
Brazo flejible solo para montar sobre soportes
Tendeur flexible seul – pour le montage sur supports
et accouplements
Braccio flessibile solo – per il montaggio sul supporto
di fissaggio

13-428-00

Brain Retractor, flexible, for one flat spatula complete, consisting of:

Fixation Base for one flexible arm

Flexible Arm

Support for flat brain spatulas

**13-429-00**

Brain Retractor, flexible, for two flat spatulas complete, consisting of:

Fixation Base for two flexible arms

2 Flexible Arms

2 Support for flat brain spatulas

**13-430-0**

Flexible Arm

13-431-00

Spare Part:

13-432-00

Wire Cable, only





13-433-00

Fixation Base for skull mounting,
holding one flexible arm



13-434-00

Fixation Base for skull mounting,
holding two flexible arms



13-435-00

Support, only, for flat brain spatulas,
for fixation at the flexible arm



13-436-00

Support, only, for brain spatulas with round shaft
up to 5.5 mm diam., for fixation at the flexible arm



13-437-00

Fixation Base for mounting on bars up to Ø 16 mm
for one flexible arm



13-438-00

Self-Retaining Retractor for fixation to the operation table, complete, consisting of:

- Ball and Socket Joint
- Holding Arm
- Coupling Head
- 2 Flexible Arms
- 2 Supports for flat spatulas
- Brain Spatula
- Brain Spatula



13-439-00

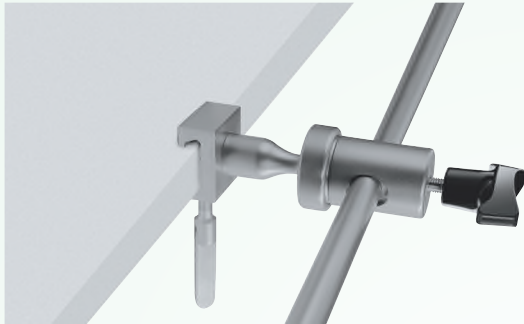
Self-Retaining Retractor for fixation to the operation table, without support, consisting of:

- Ball and Socket Joint
- Holding Arm
- Coupling Head, laterally open, to hold one flexible arm
- Flexible Arm



13-440-00

Holding Arm, detachable, for fixation in ball and socket joint for holding one of the coupling heads



13-441-00

Ball and Socket Joint for fixation at the operating for holding arm table



13-442-00

Flexible Arm

13-443-00

Spare Part:

13-444-00

Wire Cable, only



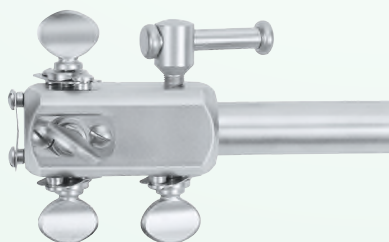
13-445-00

Coupling Head, laterally open, to hold one flexible arm



13-446-00

Coupling Head, rotatable, to hold one flexible arm



13-447-00

Coupling Head, to hold max. five flexible arms



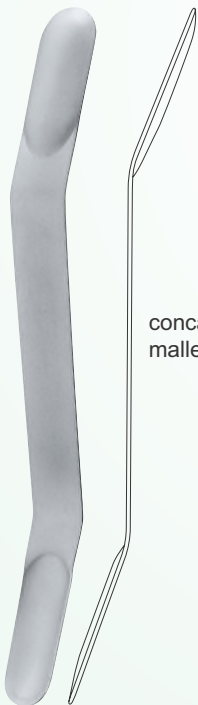
malleable

13-448-12	20 cm - 8"	12 mm
13-448-17	20 cm - 8"	17 mm
13-448-20	20 cm - 8"	20 mm
13-448-25	20 cm - 8"	25 mm
13-448-25	25 cm - 10"	25 mm



Memory-metal (shape memory alloy) can be bent as often as necessary according to the surgeon's requirements; however too strong bending should be avoided. From a certain temperature on (in this case during sterilization) the material bends back into its initial shape.

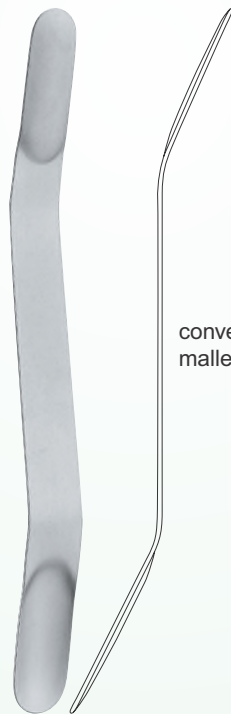
13-449-09	20 cm - 8"	9 mm
13-449-12	20 cm - 8"	12 mm
13-449-14	20 cm - 8"	14 mm
13-449-18	20 cm - 8"	18 mm
13-449-20	20 cm - 8"	20 mm
13-449-25	20 cm - 8"	25 mm



concave,
malleable

Olivecrona

13-450-07
13-450-11
13-450-15
13-450-18



convex,
malleable

Olivecrona

13-451-07	18 cm - 7"	7 + 9 mm
13-451-11	18 cm - 7"	11 + 13 mm
13-451-15	18 cm - 7"	15 + 18 mm
13-451-18	18 cm - 7"	18 + 22 mm



malleable

13-452-08	8 mm
13-452-11	11 mm
13-452-14	14 mm
13-452-17	17 mm

15.5 cm - 6"

Heifetz



malleable

13-453-07	7 + 9mm
13-453-11	11 + 13mm
13-453-15	15 + 18 mm
13-453-18	18 + 22 mm

18 cm - 7"



malleable

13-454-12	12 mm
13-454-17	17 mm

20 cm - 8"



malleable

13-455-14	14 mm
13-455-17	17 mm
13-455-20	20 mm

20 cm - 8"



malleable

13-456-09	20 cm - 8"	9 mm
13-456-12	20 cm - 8"	12 mm
13-456-25	25 cm - 10"	12 mm



malleable

13-457-07	7+8 mm
13-457-10	10+11mm
13-457-13	13+14 mm
13-457-16	16+17 mm
13-457-19	19+20 mm
13-457-22	22+25 mm
20 cm - 8"	

Mod. Aachen



malleable

13-458-06	6 mm
13-458-10	10 mm
13-458-14	14 mm
13-458-16	16 mm
13-458-19	19 mm
13-458-25	25 mm
13-458-32	32 mm
13-458-38	38 mm
18 cm - 7"	

Davis



malleable

13-459-10	10+13 mm
13-459-16	16+17 mm
20 cm - 8"	

Scoville



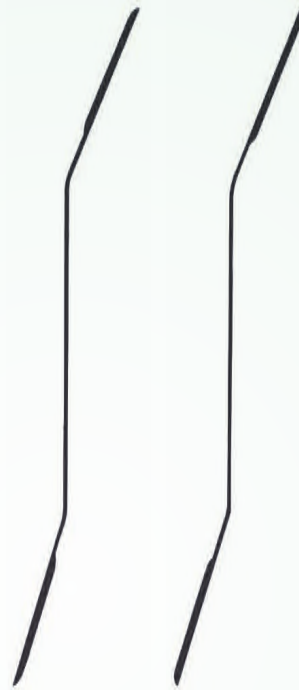
Cushing

13-728-07	7 mm x 9 mm
13-728-11	11 mm x 13 mm
13-728-15	15 mm x 18 mm
13-728-18	18 mm x 22 mm
18 cm - 7"	



Olivecrona

13-729-07	13-730-07	7 mm x 9 mm
13-729-11	13-730-11	11 mm x 13 mm
13-729-15	13-730-15	15 mm x 18 mm
13-729-18	13-730-18	18 mm x 22 mm
18 cm - 7"		18 cm - 7"
convex	concave	
konvex	konkav	
convexa	côncava	
convexe	concave	
convessa	concava	

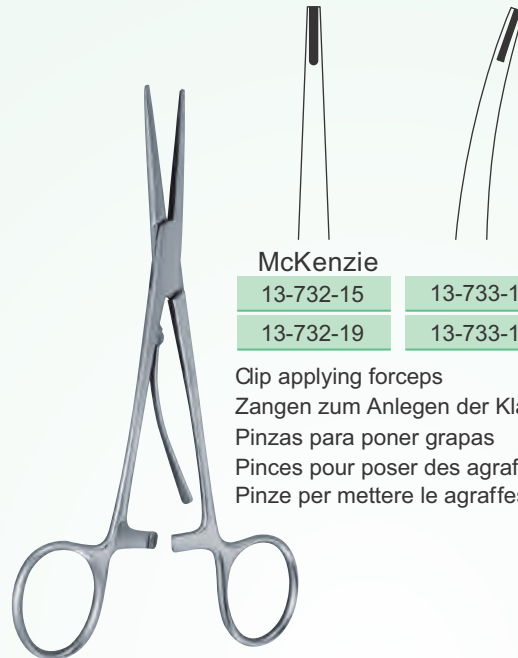


+ X -



Heifetz

13-731-08	x = 8 mm
13-731-11	x = 11 mm
13-731-14	x = 14 mm
13-731-17	x = 17 mm
13-731-20	x = 20 mm
20 cm - 8"	
malleable	
biegsam	
maleable	
malléable	
flessibile	



McKenzie

13-732-15	13-733-15	15 cm - 6"
13-732-19	13-733-19	19 cm - 7 1/2"

Clip applying forceps
Zangen zum Anlegen der Klammern
Pinzas para poner grapas
Pincés pour poser des agrafes
Pinze per mettere le agraffes



McKenzie

13-734-14 14.8 cm x 4 cm x 6 mm - 5 3/4" x 1 1/2" x 1/2"

Brain clip-rack for 20 clips
Klammerblock für 20 Klammern
Porta-grapas para 20 grapas
Porte-agrafas pour 20 agrafes
Supporto port'agraffes per 20 agraffes



13-735-00

100 Brain clips in plastic box
100 Klammern im Plastikbehälter
100 grapas en tubo de plástico
100 agrafes dans un tube de plastique
100 agraffes nella scatola di plastica